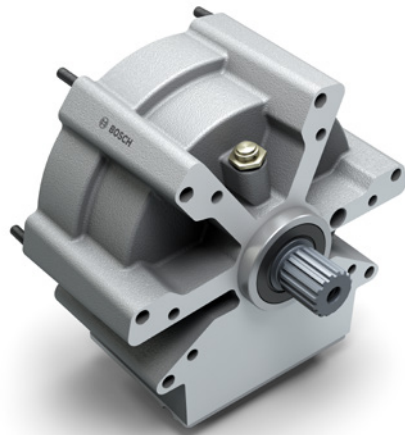


Electric drivetrain transmission EDT180

High-speed transmission for electric motor SMG180 OHW

Compact coaxial planetary gearbox for use in electrified mobile machinery



compact
design

for electrification of mechanical and hydraulic systems

high
speeds

due to integrated active oil lubrication and external water cooling

completely
maintenance-free

No oil change, no replacement of bearings and seals

- ▶ The EDT180 reduction gearbox, in combination with the SMG180 electric motor, enables a simple and space-saving electrification solution while retaining existing gear interfaces.
- ▶ The integrated mechanical oil pump allows high speeds with minimized mechanical wear.
- ▶ Mounting options for flange plates and cardan shafts allow flexible connection to the mobile machinery.

TECHNICAL CHARACTERISTICS

Type	Straight toothed single stage planetary gearbox
Gear ratio	3,086
Maximum torque input	200 Nm
Maximum torque output	617 Nm
Maximum power	90 kW
Maximum speed input	12,800 rpm
Maximum speed output	4,148 rpm
Output shaft	DIN 5480 W35x2x16x8f
Bolt hole diameter	245 mm
Length	139 mm
Weight	17 kg
Cooling	Water-glycol mixture Si-OAT 50:50, 6–8l/min
Ambient temperature	–40 ... +85°C